



# The Phillipian

PHILLIPS ACADEMY  
ANDOVER, MASS.

Volume XXXV. No. 3.

WEDNESDAY, SEPT. 25, 1912

5 cents

## THE ISHAM INFIRMARY

A Notable Addition to the Equipment of Phillips Academy  
To be Opened in November

The new Isham Infirmary has been accepted by the Academy from the contractors and will be open for use about November 1.

The work on the infirmary, one of the latest additions to the school plant, was started during the latter part of March. The school is certainly to be congratulated on this valuable addition to its equipment.

lem of dealing with indispositions and serious illnesses among the student body with limited and wholly unsatisfactory facilities, will appreciate more deeply than anyone else can the significant value of this new and most welcome gift.

A description of the building will no doubt prove of interest. The building is built of brick with stone

## FOOTBALL TODAY

Second Round of Class Series to Be Played This Afternoon

The second set of games of the first football round will be played off this afternoon. Some fairly good games are expected, since after the first games the men have had some experience and should play an all-round better game. The following are the line-ups of the class teams, but as some of the men may be shifted from time to time, no definite line-up can be

(Continued on Page 3)

## MANDOLIN CLUB TRIALS

The following men have made the Mandolin Club:

Sharp, Phillips, Poole, Moorehead, Thompson, Armour, Keeney, Powell, Dickey, Ogden, Titcher, Barker, Ferguson, True, Wells, Shepard (traps.)

## Music Notes

The choir rehearsals are scheduled to take place as follows: 1st tenors, Monday 6.30; 2nd tenors, Monday 7.15; 1st basses, Wednesday 6.45; 2nd basses, Thursday 6.45. All of these rehearsals take place in the Archaeology building.

## CLASS FOOTBALL

Middlers Defeat 1913 Second and Seniors and Junior Middlers Tie

On Saturday, 1914 defeated 1913 2nd on the Old Campus in a rather one-sided game, during which there were numerous fumbles, owing to the fact that both teams were playing for the first time. Exceptionally good playing was shown by Nielson, Murray, Sullivan and Perkins. Early in the game Delaney, 1913 2nd's quarterback, broke his ankle. In the short time that he played it was seen that if this unfortunate accident had not occurred, he would have, beyond doubt made the varsity squad.

## FIRST QUARTER

1913 kicked off to Nielson who advanced the ball 15 yards. Perkins made a 50-yard run, but the ball was lost by a fumble on the 15-yard line. After three downs, '13 kicked to Murray who made a 35-yard run. Nielson took the ball over for a touchdown. The try for a goal missed.

## SECOND QUARTER

1914 kicked off. '13 was held back and returned the kick to Murray. Nielson forwarded to Wilson, who made a touchdown. No goal. '13 kicked to Murray, who ran it back 25 yards. End of first half. Score: 1914, 12; 1913 2nd, 0.

## THIRD QUARTER

Murray made 40 yards on '13's kick. Allen regained '13's fumble. '13 kicked to '14, and Perkins made 10 yards. '14 was penalized five yards for offside. 1914 kicked to White. '13's forward pass was caught by '14.

## FOURTH QUARTER

1914 tried a drop goal which fell short and was caught. '13 kicked to Nielson. Nichols took Wilson's place, and Rattray, Hennessey's. Twenty-five yards were gained by Nielson. Murray recovered a fumble. The whistle blew when the ball was not far from '13's goal. The summary:

1914 Smith, c. Jones, lg. Duffee, lt. Wilson, Nichols, le. Sullivan, rg. E. Coles, rt. Hennessey, Rattray, re. Murray, qb. Perkins, lhb. Conway, rhh. Nielson, fb.	1913 2d c. Whittlesey lg. Quinn lt. Fuller le. Fletcher rg. Stevens rt. W. Allen re. Daley qb. White lhb. Richardson rhh. J. F. Brown fb. Delaney
---	--

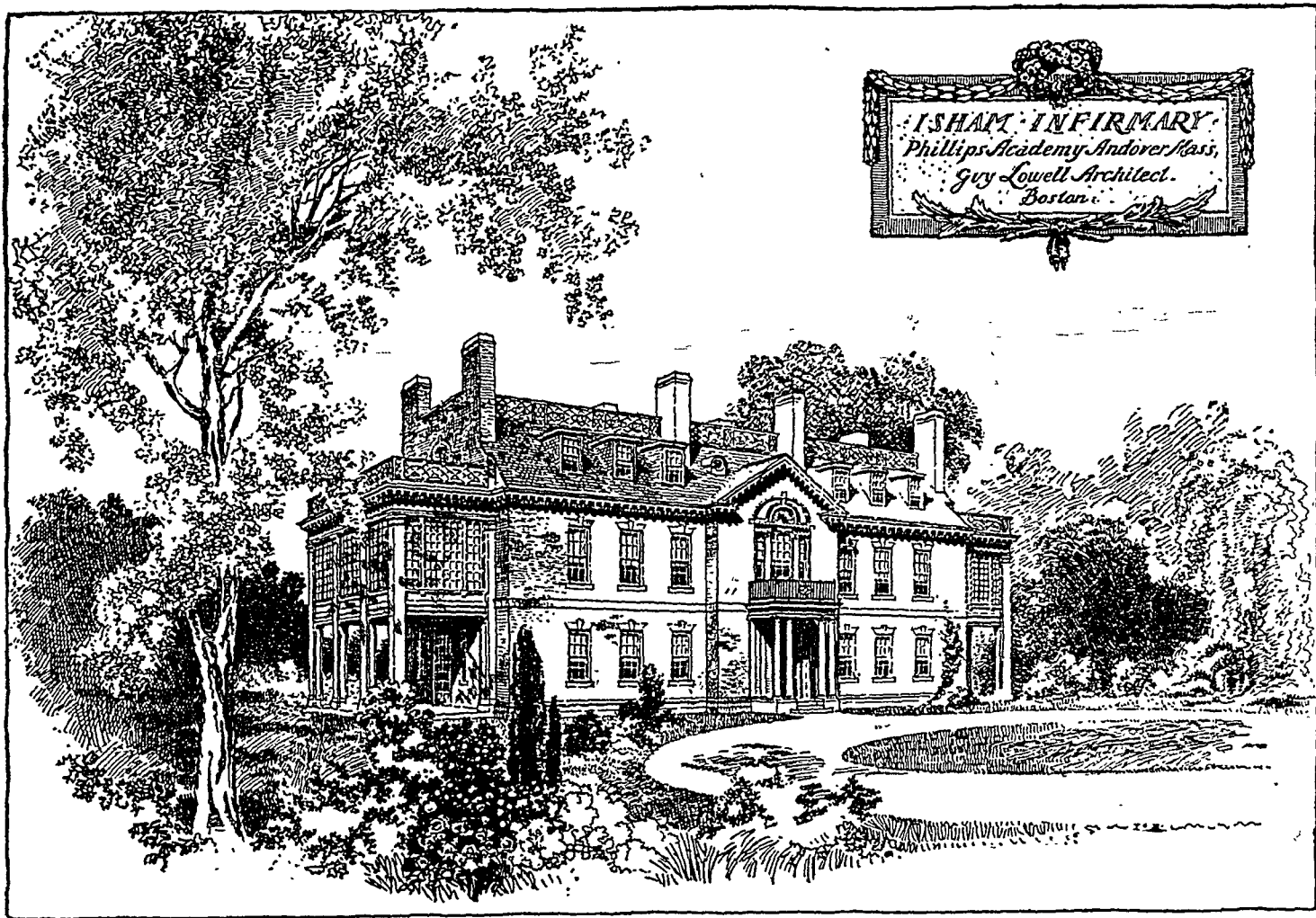
Score, 1914, 12; 1913 2nd, 0.  
Referees, Dr. Page, Mr. Thurber; umpire, Mr. Towers; head linesman, Rodgers.

The Junior Middlers and the Seniors fought a well-contested game to the tune of 0 to 0. Quite a crowd assembled, owing to the fact that this was the first game of the season. The playing throughout the game was even and the ball went from one 15-yard line to the other. Gault starred for '15. The following is the lineup:

1913 Wiley, c. Farrar, rg. Broussard, rt. Baldridge, lt. Hogg, lg. Chatterton, re. Sheldon, le. Ames, qb. Burnham, rhh. Delaney, Cochran, lhb. Gould, fb.	1915 c. Williamson rg. Duffee rt. Culom lt. Buckley lg. Hamlin re. Lindsay le. Marsh qb. Eadie rhh. Gault lhb. West fb. Newton
--	---

On Saturday, 1913 3rd defeated 1916 by the score of 19 to 9 on the Old Campus. The game was very one-sided in the first half, but dur-

(Continued on Page 4)



for it will supply a long-felt need, and in the future, whatever cases of illness may occur, parents and boys alike may rest assured that in the new infirmary patients will find every facility known in modern hospital construction for handling sickness and accident, and that the care and attention provided will be on a par with that which is regularly afforded in the best of hospitals. The infirmary is to bear the name of its most generous donor, Miss Flora E. Isham of New York City, whose three nephews, Charles Isham, '71, Samuel Isham, '71, and William B. Isham, '73, passed their school days at Phillips Academy, and have since been loyal to its interests, and prominently identified with the Alumni Association of New York City.

The building has been located by Olmsted Brothers at the end of the roadway which leads from Phillips Street up past the Andover and Eaton Cottages. It will stand 150 feet beyond the Eaton Cottage, and west of the northerly end of the running track. Located on the brow of the hill, it will command an extensive and beautiful view to the south and west. Although isolated enough to secure quiet, it will yet be within easy access of the other school buildings. The school authorities, who have had to face for many years the intricate prob-

trimmings, and is old colonial in its design. It faces to the north; so that both wings and the rear, where most of the wards will be located, will have the fullest amount of sunshine. The basement of the building contains, in addition to the heating plant and storage rooms, the main kitchen with its serving pantry, and a spacious laundry. The serving pantry will be connected with a lift by which meals can be sent directly to the upper floors.

On the first floor a vestibule leading from the front door, opens into the main corridor which runs from end to end of the building. On the sides of this hallway are several single private wards with bath-rooms attached; the main dining-room and serving-room, the matron's room, and a doctor's room. The wards on this floor are so arranged that they can be used in case of necessity by parents whose sons may be ill, and who may desire to be near them during the period of their indisposition. At the westerly end of the hall is a large sitting-room from which a door leads out onto the piazza. At the easterly end of the hall is the main operating room, with sterilizing room and doctor's wash-rooms attached. From this room a door leads out onto the eastern piazza.

(Continued on Page 4)

## Swimming Trials

On Saturday evening trials in the 50-yard swim were held in the Pool to find out if there was any varsity material. No new men showed up especially well.

The following are some of the best times made: Hulbert, 28.3; Bevins, 29.3; Haskell, 29.4; Rosener, 29.4; Waring, 30.; Moore, 30.; Cavis, 32.1.

## Notice

All fellows who put promises to pay in the collection for the library are asked to call at J. Dillon's room, 9 Phillips, and pay up without delay. It is important that everyone should do this immediately so that the magazine subscriptions may be sent in time to receive the fall issues.

## Philo

On Friday evening at 7.15 the first regular meeting of Philo for the year will be held in Room 3, Graves Hall. All new men interested are invited to be present. The program will be as follows:

Topics of the week, Boynton; Select reading, Ogden; subject for debate, "Resolved, That it is necessary for the United States to build more than one battleship a year." Affirmative, leader, Hale; assistant, Woodford; Negative, leader, Feeney; assistant, Tetley. Critic, Mr. Stott.

The full rehearsal takes place in the chapel on Friday evening at 6.45. Should any fellow not yet having tried for the choir and glee club care to have a trial he can see Mr. Pfatteicher immediately before or after any of these rehearsals.

## New System in Athletics Receives Compliment

It is a compliment to the Andover system that it has been adopted by the Winchester High School. The plan is, as all know, to have as many men as possible take part and receive good coaching in athletic sports. The coaches and the boys have taken to the idea and Andover results are expected.

## Forum

The first meeting of Forum will be held in the Archaeology building on Friday evening, September 27. The select reading will be rendered by Tesch, the topics of the week by Hobden, and the extempore by Nickum. The debate will be, "Resolved, That the cap and gown should be adopted by the Senior class of Andover for graduation exercises." The men for the affirmative are, Winters, leader, and Hawley, assistant. Those for the negative are Davison, leader, and Mainini, assistant. Mr. Crawford will render the critique. All are cordially invited to attend whether members or not.

# The Phillipian

## BOARD OF EDITORS

### Managing Editor

ROBERT N. QUINN

### Business Manager

J. E. WOOLLEY

### Associate Editors

DAN R. HANNA

KNIGHT WOOLLEY

EDWARD L. DAVIS

FRANK M. DUNBAUGH, JR.

DAVID C. HALE

DAN C. ELKIN

WALDO L. TUCKER

ROBERT S. COOK

Published every Wednesday and Saturday during the school year.

### Notice to Advertisers

To insure change of advertisement, copy must be received for Wednesday not later than Tuesday noon; for Saturday not later than Friday noon. All business communications should be addressed to the Business Manager, J. E. Woolley, 17 Bancroft, Andover, Mass.

All Alumni communications should be addressed to the Managing Editor, 5 Abbott House, Andover, Mass.

Terms: \$2 per Year. Single Copies, 5 Cts.

Entered at the Andover Post Office as second class mail matter.

## THE ANDOVER PRESS

This issue in charge of R. S. Cook.

September 12, 1912

With this issue of the *Phillipian* several radical changes have been made in the general appearance and form of the paper. Its size has been considerably increased and it is proposed, besides the general school news, to divide the paper into several departments, one containing up-to-date news from the large colleges and another containing news items from the school, which are of general interest. To make the *Phillipian* this year a success it is up to every fellow in school to do his share towards supporting it, by subscribing for the year. The *Phillipian* also needs more helpers. So far but few fellows have turned out to help news for this term, and an exceptionally good chance is offered for a fellow to make the board.

Mr. Stearns recently asked the fellows to be careful not to walk on the grass. This has accomplished a great deal, but there still remains a tendency to take a short cut. The appearance of the campus has always been a just cause of pride to the school and, with the exercise of a little care will remain so. There is no reason why the money used by the school in keeping the grounds in order should be wasted because of the laziness of some fellows, and we hope all cause for complaint will in the future be stopped.

### A Men in School

The following is a list of men who have the football, baseball, track, soccer, hockey, cross country, basketball and swimming team insignia.

#### FOOTBALL A

Sullivan, Ames, Hogg, Thompson, Nielson, Gault, Sheldon.

#### BASEBALL A

Wiley, Murphy, Tesch, Swett, Daugherty.

#### TRACK A

Crary, Nichols, Davis, Bartlett, Prescott, Nielson.

#### SOCCER AFF

Mackinlay, Lee, Young, Blanchard, Tucker.

#### CROSS COUNTRY CAC

Meyer, Feeney, Holden.

#### BASKETBALL BAB

Chatterton, Dillon, Thompson.

#### SWIMMING TEAM

Moore, Gould, Thompson, Allen.

#### HOCKEY HAT

Gould, Cook.

## CALENDAR

### TODAY

12.15—Class C tennis.  
2.00—Class A tennis.  
2.30—1913 vs. 1914 football.  
2.30—1913 third vs. 1915 second football.  
5.00—Make up gym class.

### THURSDAY

12.15—Class A tennis.  
2.00—Class B tennis.  
2.15—Class football.  
2.15—Class soccer.  
2.15—1915 track.  
2.15—1916 track.  
3.00—1913 track.  
3.00—1914 track.

### FRIDAY

12.15—Class B tennis.  
2.00—Class C tennis.  
2.15—Class football.  
2.15—Class soccer.  
2.15—1915 track.  
2.15—1916 track.  
3.00—1913 track.  
3.00—1914 track.

### Inquiry

Sunday evening Mr. McCurdy gave a very interesting and helpful talk on the influence which may be exerted in every-day life. He began his speech by quoting an example from an English novel, that of a wealthy young man, who had been confined to his bed since boyhood, and his prestige among the tenants of his large estate. This instance illustrated how much one man, although not in active life, could affect others near him.

Missionaries who formerly went among the heathen began to try to drive Christianity into them immediately; now they settle down and live simple, straightforward and pious lives among them, relying on the example to educate the natives. After a year or two of time at first seemingly wasted, the latter usually have imitated and adopted many customs and are anxious to learn more. Then the missionary will find them ready to lend an interested ear to his teachings. Mr. McCurdy mentioned as examples of unconscious influence three men of his boyhood days. The first was a simple farmer, a quiet man who was always seen in his pew at church on Sundays, and on whom everyone could rely. Second, a man who, although not wealthy, quietly gave large sums; and third, the old minister of the village church, and his benign character. These three men gradually exerted a strong and lasting influence over the whole community by their lives. A fellow who is always found on the right side of a doubtful question, and who, in the small affairs of every-day life without any great show is seen always doing his best, is the man who will always have the same power over everyone with whom he comes in contact.

At a business meeting after Mr. McCurdy's talk, Gould was unanimously elected to represent the Society on the Student Council.

## F. L. DUNNE & CO.

TRANSCRIPT BUILDING

BOSTON

AND

NEW YORK

297 FIFTH AVE.

Polo and Racing Breeches

## Lawrence Work to Begin Tuesday

The evening classes for teaching English to the foreigners at the Phillips Andover Educational Institute in Lawrence will begin Tuesday, evening next week. A number of fellows have already made application to teach one of these classes.

As in previous years, a fellow can go over only one night a week, and in addition to this he must be up in his studies and be passed upon by the faculty. Only a limited number can be assigned to classes and it is, therefore, quite necessary for those who desire to

become teachers in this night school to hand their applications to "Jimmie" Gould, Jack Wiley, John Hamilton or Timbie, on or before Saturday night of this week. The applications will be considered in the order they are received.

The application should state what evening would be the most convenient to go to Lawrence. The teaching staff leave the hill on the 6.45 car for Lawrence and return on the nine o'clock car, reaching Andover at 9.30 p.m.

Cut out and fill in the application blank printed below and hand it to one of the fellows mentioned above.

Name .....  
School Address .....  
Most convenient night to go is .....  
The next is .....  
Class .....

(Continued from Page 1)

ing the latter part '16 tightened up and scored nine points.

'16 kicked off, and '13 in a few downs rushed the ball up the field for a touchdown by Garston. No goal. '13 kicked off, got the ball, and Garston made another touch-

down. '13 kicked off, captured a fumble and got a touchdown. Hartigan kicked the goal. '16 kicked a field goal and soon Ross made a touchdown for '16. No goal.

Score, 1913 3rd, 19; 1916, 9. Referee, Mr. Bennett; umpire, Doby.

## Well Dressed Andover Men have their Clothes made by



# BURNS



### The Phillips Academy

### Tailor and Outfitter,

### Elm Square

### THE BAY TREE GIFT SHOP and TEA ROOM

### PICTURE FRAMING

### GOLDSMITH-CLARK COMPANY Yrco Bldg.

# 944

## Chapel Street

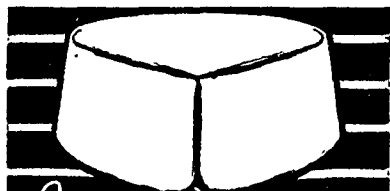
### (NEW STEINERT BUILDING)

### →Second Floor←

### Is now the address

### — of —

### GRUENER BROTHERS IMPORTERS & TAILORS



## ARROW Notch COLLARS

THE BELMONT STYLE IN FOUR HEIGHTS  
GLASGOW 2 1/4 in. BELMONT 2 3/4 in.  
MEDORA 2 1/2 in. CHESTER 2 in.  
2 for 25 cts. CLUETT, PEABODY & CO., Makers

## J. E. Purdy & Co.

### Official Photographers Phillips Academy 1911

STUDIO

### 145 TREMONT STREET

### BOSTON



## STANDARD QUALITY

TENNIS  
GOLF  
BASEBALL  
CRICKET  
FOOTBALL  
BASKETBALL

Athletic Equipment  
Catalogue FREE.

There is no quick sand more unstable than poverty in quality and we avoid this quicksand by standard quality.

A. G. SPALDING & BROS.  
141 Federal Street,  
BOSTON



J. E. WHITING  
...Jeweler and Optician...  
PHILLIPS SEALS  
Andover, Mass.

WHITEHOUSE & HARDY  
124 Broadway New York Opp. Vanderbilt New Haven

### COLLEGE SHOES

ANDOVER AGENT, - J. H. DILLON, Phillips 9

### "Individuality"

## HOTEL LENOX BOSTON

## Macular Parker Company CLOTHING

Ready to wear and to measure. The best in style, fabric, and fit. Made in workshops on the premises. Special attention given to the requirements of students, both in clothing and furnishing goods.

400 Washington St., Boston

## School Directory for Fall Term

Undergraduate Treasurer—Knight Woolley, Bancroft 11.

### Football

Captain—John Gault, 28 Bishop. Manager—Dan Hanna, 13 Phillips.

### Baseball

Captain—Jack S. Wiley, 11 Bancroft. Manager—John Hamilton, Stone House.

### Track

Captain—Stuart Crary, Ellis House. Manager—W. G. Wilson.

### Soccer

Captain—J. B. Mackinlay, 5 Andover. Manager—J. F. Brown, 5 Bancroft.

### Lacrosse

Captain—Wayne Palmer, 16 Bishop. Manager—Not elected.

### Hockey

Captain—James Gould, 4 Phillips. Manager—Knight Woolley, 11 Bancroft.

### Tennis Manager

J. H. MacMillan, 22 Phillips.

### Swimming

Captain—James Gould, 4 Phillips. Manager—Not elected.

### Mandolin Club

Leader—Arthur E. Sharp, 7 Abbot.

### Banjo Club

Leader—Robert J. Powell, Clark House.

### Glee Club

Leader—Harrison S. Royce, 30 Bartlett.

### Manager of Musical Clubs

Lawrence K. Doby, 28 Bishop.

### Phillipian Board

Managing Editor—Robert N. Quinn, 5 Abbot. Business Manager—J. Eliot Woolley, 17 Bancroft.

### Mirror Board

Managing Editor—D. G. Poore, 29 Bishop. Business Manager—P. L. Hunt, 6 Bishop.

### Philo

President—H. S. Stockwell, 10 Bishop. Secretary—R. S. Cook, 19 Phillips.

### Forum

President—Wayne Palmer, 16 Bishop. Secretary—A. L. Rosener, 10 Bartlett.

### Inquiry

President, James Gould, 4 Phillips. Secretary—N. Boynton, 6 Andover.

Kodaks

Photo Supplies

## EVERYTHING FOR

# FOOTBALL

### Outfitter for all P. A. Teams

## H. F. CHASE

Arco Building Andover

### TELEPHONE CONNECTION

## GOES & YOUNG CO.

20 SCHOOL ST.

BOSTON

and

HARVARD SQ.

CAMBRIDGE

MASS.



MEN'S SHOES

# HATS

## CAPS GLOVES COATS

## YOUNG MEN

# JACKSON & CO.

126 Tremont St.,

Boston



## ANDOVER SONGS AND CHEERS

The school songs are being printed especially early this year so that the new fellows will have no excuse for not knowing them.

## The Phillippian March

Here comes the team, let's cheer them on,  
Show them our hearts are true.  
Might always gains but courage wins,  
So will our boys in blue.  
We're here to win again,  
And bound again to gain.  
We'll guard, protect and bear on high  
Old Andover's fair name.  
Chorus:  
Cheer, cheer, boys, cheer, cheer,  
For the game is surely ours.  
We're winning every point,  
We're heaping up the score.  
Our foemen tremble,  
For they cannot long prevail.  
With old Andover's grit and sand  
A team can never fail.

## Andover Victory Song

Come, ye sons of old Andover,  
Send the ball a-plunging over,—  
Play with might and main,  
Ten more yards to gain;  
Send the Crimson back to cover  
While around the goal we hover  
A—N—D—O—V—E—R  
Show them who we are!

## CHORUS

Andover's it to-day,  
Get out and watch us play,  
See our heroes go  
Smashing through the foe;  
Onward, now, everyone,  
Fight till the game is won,  
Hats off and cheer them, poor Exeter  
fears them,  
P. A. and victory! (Rah! Rah! Rah!)  
See our score is growing, growing,  
All up now and make a showing,—  
Loyal to the Blue,  
We are ever true;  
Hear the grandstand shouting madly,  
Exeter is beaten badly,—  
A—N—D—O—V—E—R  
They know who we are.

## Old P. A.

(Printed by permission.)

We're here with the team once again,  
boys,  
Two hundred strong, to cheer them  
on.  
So hand out old Andover's name,  
boys,  
Across the field, and never yield!  
There's no hope today for poor  
Ex'ter,  
For they are true, those boys in blue.  
Oh, Andover'll land, she's got the  
sand,  
Give a cheer for old P. A.  
CHORUS  
Fighting for old P. A., boys,  
Fighting with heart and soul,  
Tearing our way on to victory,  
Nearing the crimson goal.  
See how old Ex'ter trembles,  
Andover wins today!  
Stand by the blue, we're always  
true  
To you and old P. A.,  
Malcolm K. Fletcher, class of 1904

## Andover Rah!

It's the same old Andover,  
We are here to win today,  
See poor Ex'ter fly to cover  
When the blue gets in the fray.  
(Get out of our way)  
First down,—Oh, this is easy,  
That goal is just before;  
Smash them through,—and make a  
touchdown  
For this is where we score.

## CHORUS

All hail to old Andover,  
Victor crowned on many a field;  
Our crimson foemen tremble  
And before the blue must yield;  
On your feet, now altogether,  
Give a cheer for An-do-ver, Rah!  
Rah! Rah!  
Lift your voices on high,  
Let your cheers rend the sky  
For old Andover wins today.  
Oh the boys from New Hampshire  
Will learn a thing or two  
When they meet with Captain Gault  
And the team that wears the blue.  
(To them we are true).  
Now the Ex'ter stands are silent  
And the crimson banners fall,  
While the blue sweeps on to victory,  
Let us cheer them one and all.

## ATHLETIC REPORT

The report of the Athletic Association is very good, especially if one takes into consideration the fact that over \$4000 was spent on the improvement of Brothers Field. Of the teams whose reports are published below only the baseball team was self-supporting.

## RECEIPTS

Balance from 1910-1911	\$ 305.78
Athletic fees	6,760.78
Interest on deposits	15.47
Baseball	3,222.71
Basketball	52.50
Football	868.10
Hockey	17.50
Soccer	72.50
Tennis	11.57
Track	392.08
Swimming	43.80
Sundries	36.19

## EXPENDITURES

Phillips Academy, Brothers Field	\$4,300.00
Bookkeeping	75.00
Safe	51.00
Torches	70.00
Printing and Stationery	66.98
Baseball	2,535.51
Basketball	358.03
Football	2,166.10
Hockey	365.81
Soccer	406.37
Tennis	99.88
Track	849.62
Swimming	142.49
Gym Team	20.71
Lacrosse	51.66
Sundries	108.51

Balance on hand \$11,667.67  
131.43

(Signed) \$11,799.10

C. T. TIMBIE

## Baseball Association

## RECEIPTS

Guarantees	\$ 37.50
Gate Receipts	3,015.06
Proceeds score card	146.65
Sundries	23.50

## EXPENSES

Guarantees	\$ 626.77
Expenses of games	251.55
Supplies	1,107.45
Printing and stationery	137.85
Travelling Expense	207.85
Expense of Celebration	128.50
Rubbing	9.00
Meals	24.00
Sundries	42.45

Cr. balance \$2,535.51  
687.20

\$3,222.71

## Tennis Association

## RECEIPTS

Guarantees	\$ 11.57
Allowed from Athletic fees	150.00

## School Cheers

## LONG ANDOVER

Andover! Andover! Andover!  
Rah-Rah-Rah, Rah-Rah-Rah, Rah-  
Rah-Rah—  
Andover! Andover! Andover!

## PHILLIPS

1. (Spell slowly) P-H-I-L-L-I-P-  
S, Rah, Rah, Rah!  
2. (Repeat faster.)  
3. (Repeat still faster.)  
(Name), (Name), Bully for  
(Name).  
Andover, Andover, Rah!  
(Name), (Name), Bully for  
(Name),  
Andover, Andover, Rah!

## SKYROCKET

Skyrocket! (whistle) Boom! Ah!!  
(Name).

## TWO AND ONE

(Name)! (Name)!! Rah-rah-rah,  
(Name).

## THREE TIMES THREE

Rah-rah-rah, (Name)!  
Rah-rah-rah, (Name)!!  
Rah-rah-rah, (Name)!!!

## PRINCETON YELL

Rah! Rah!! Rah!!!  
A-N-D-O-V-E-R!  
Team! Team! Team!

## P. A., P. A., RAH-RAH

P. A., P. A., Rah-rah!  
P. A., P. A., Rah-rah!  
Hoo-rah! Hoo-rah!  
Andover, Andover, Rah!

BEGIN RIGHT ON  
YOUR CLOTHES

## Old Hampshire Bond Stationery

"The Stationery of a Gentleman"

Agents call Tuesday evenings

Special Hall Stationery

Memo and Manila Pads

LEAVE ORDERS IN BOXES

AMES and RATTRAY, School Agency

## EXPENSES

Guarantees	\$10.34
Supplies	51.00
Travelling Expense	34.64
Stationery	3.90

Cr. balance \$ 99.88  
61.69

## Track Association

## RECEIPTS

Guarantee	\$242.44
Gate Receipts	19.34
Sundries	130.30
Allowed from Athletic fees	800.00

\$1,192.08

## EXPENSES

Expense of Meets	\$ 39.15
Supplies	481.90
Printing and Stationery	25.25
Travelling Expense	256.97
Rubbing	9.00
Meals	11.55
Sundries	25.80

Cr. balance \$ 8499.62  
342.46

\$1,192.08

## Swimming Team

## RECEIPTS

Guarantees	\$ 43.80
Allowed from Athletic fees	150.00

\$193.80

## EXPENSES

Expense of Meets	\$ 23.54
Supplies	6.50
Printing and Stationery	4.65
Travelling Expense	107.55
Sundries	0.25

Cr. balance \$142.49  
51.31

\$193.80

## Gym Team

## RECEIPTS

Allowed from Athletic fees	\$ 50.00
----------------------------	----------

\$50.00

## EXPENSES

Supplies	\$12.70
Travelling Expense	8.01

Cr. balance \$20.71  
29.29

\$50.00

## Lacrosse Team

## RECEIPTS

Allowed from Athletic fees	\$100.00
----------------------------	----------

\$100.00

## EXPENSES

Guarantees	\$ 37.00
Travelling Expenses	14.66

Cr. balance \$ 51.66  
48.34

\$100.00

(Continued from Page 1)

given. The following are the line-ups as they now stand:

## 1913

Chatterton, re.  
Farrar, rt.  
Broussard, rg.  
Wiley, c.  
Hogg, lg.  
Baldridge, lt.  
Thompson, Sheldon, re.  
Ames, Burnham, Thompson, qb.  
Gould, Crossman, Burnham, Cochran, backs.

## 1914

Hennessey, re.  
Jones, rt.  
Sullivan, rg.  
Gile, c.  
Cole, lg.  
Smith, lt.  
Wilson, le.  
Murray, qb.  
Conway, rhb.  
Perkins, lhb.  
Neilson, fb.

## 1915

Buckle, Mars, ends.  
Hamlin, Newton, tackles.  
Conway, Durfee, guards.  
Williamson, c.  
Eadie, qb.  
Gault, West, McManus, backs.

## HANNON

has made clothes for P. A. Boys for over twenty years. He is still making them for many of his first customers.

A hint to the new Boys at Phillips

See Hannon on your clothes problems

Main Street, Andover

## The Sherman Studio

Is better equipped than  
ever for turning out

HIGH GRADE  
PHOTOGRAPHS

We have group pictures of all P. A.  
Organizations.

Special rates for Students' Portraits.

Main Street, near Morton

GAS FIXTURES and  
Students' Supplies

Lamps, Chimneys, Globes, Etc.

H. S. WRIGHT &amp; CO.

MAIN STREET, ANDOVER, MASS.

A. W. LOWE

## DRUGGIST

Press Building Andover

## BUXTON &amp; COLEMAN

HEADQUARTERS FOR

Electric Portables  
and Supplies

Park Street, Andover

MISS F. M. PORTER

## DRY GOODS

LADIES AND GENTS FURNISHINGS

TEL 374 BARNARD BLOCK

## ANDOVER NATIONAL BANK

Hours—9 to 12 m., 2 to 3 p.m.

Close Saturday at 12 m.

## FRANK E. GLEASON

Coal and Wood

Fire-Place Wood Delivered in Rooms

OFFICE - MAIN STREET



J. A. HANDLEY

TEACHER OF

## BANJO, GUITAR and MANDOLIN

Instruments for sale or Rent

Basement, ARCHAEOLOGY BUILDING

Mondays, Thursdays and Fridays

M. FRANCIS &amp; CO.

We repair shoes neatly and quickly. Popular prices.

Main Street, Andover

## The METROPOLITAN

ANDOVER'S CANDY STORE

Home-made Food, Ice Cream, Soda and Candies

Mrs. M. E. Dalton, Proprietor

42 MAIN STREET

SMITH &amp; MANNING

DEALERS IN

## Dry Goods and Groceries

Essex Street ANDOVER

J. P. WYLLIE &amp; CO.

## FINE SHOES

REPAIRING A SPECIALTY

Barnard Block Andover

## NEW BARBER SHOP

POST OFFICE AVENUE

FORMERLY ON MAIN ST.

ALBERT E. SHARP

JOHN STEWART

## Clothes Pressed

Post Office Avenue, Andover

## HOTEL CUMBERLAND

NEW YORK

Broadway at 54th Street

Near 50th St. Subway Station and 53d St. Elevated

KEPT BY A COLLEGE MAN

Headquarters for Students

"Broadway" cars from Grand Central Depot pass the door.

New and Fireproof

Strictly First-Class  
Rates Reasonable  
\$2.50 with bath and up.

Special Rates for School and College Teams.

Ten minutes walk to the theatres

HARRY P. STIMSON  
Formerly with Hotel Imperial

### Tennis Tournament

The following are the results of the tennis matches which have been played so far. All fellows must play off the first round matches by this evening or be disqualified.

1913

Kneen defeated K. Woolley, 6-1, 9-7.  
Shepard defeated W. B. Higgins, 6-1, 6-4.  
Russell defeated Whitney, 6-4, 6-1.  
Sturgis defeated Dickey, 7-5, 6-1.  
Hamilton defeated Roosevelt, 6-2, 6-4.

1915

Cullom defeated Sprong, 6-0, 6-2.  
Abbott defeated Ross, 6-2, 3-6, 6-3.  
Elwood defeated Forrest, 6-2, 6-4.  
Sayle defeated Parsons, 6-4, 7-5.  
Adams defeated Simonson, 7-5, 6-4.  
Harris defeated Weber, 4-6, 10-8, 6-4.

1914

Appleton defeated Woodward, 6-0, 6-4.  
Thurston defeated Kinney, 6-1, 3-6, 6-4.  
Phelps defeated Slack, 7-5, 6-8, 7-5.  
Daley defeated Schinerz, 6-4, 4-6, 6-3.  
J. E. Woolley defeated Lansing, 6-0, 6-1.  
Royce defeated Makepeace, 6-1, 6-1.  
R. C. Cooke defeated Peabody.  
Converse defeated Moore.  
Fox defeated Bevins.  
Alpaugh defeated Boylston, 6-4, 4-6, 6-3.

1916

Beasley defeated Morton.

1914 SECOND ROUND

Harris defeated Frost, 4-6, 10-8, 6-4.

The following matches in the 2nd round remain to be played.

1913

Sloane vs. Hayes.  
Chisholm vs. Kellogg.  
Hunt vs. DeCamp.  
Baker vs. Rubsamen.

1914

Hequembourg vs. L. W. Clark.  
Kahler vs. Stokes.  
Beilstein vs. Dwight.  
Rogers vs. Raymond.

1916

Truman vs. Lancaster.

### Andover Man Elected to Important Position in Dartmouth Athletics

At a meeting of the Dartmouth Athletic Council on September 22, I. J. French, Dartmouth '01, P. A. '97, of Boston, was elected president of the Council. Mr. French was captain of the baseball team when he was at Andover.

### At the Theatres

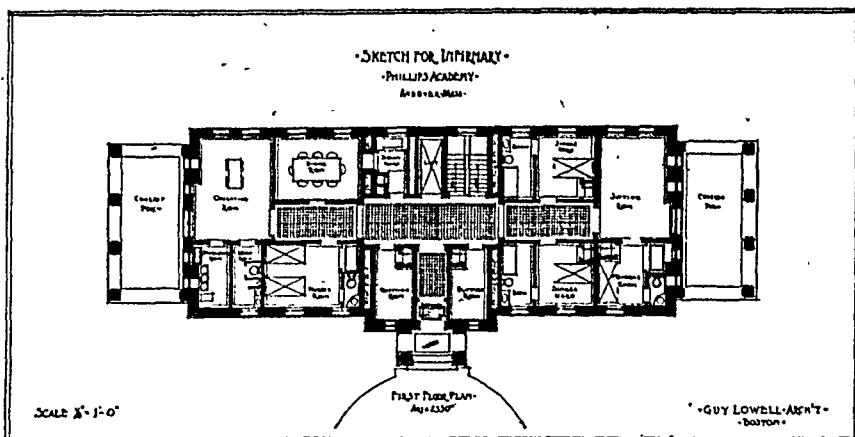
Shubert—"A Butterfly on the Wheel."  
Tremont—"The Woman Haters' Club."  
Boston—"The Greyhound."  
Park—Rose Stahl in "Maggie Pepper."  
Plymouth—Wm. Hodge in "The Man from Home."  
Castle Square—"Is Matrimony a Failure?"  
Majestic—"The June Bride."  
Hollis—"The Rejuvenation of Aunt Mary."  
St. James—"Thais."  
Colonial—Ina Claire in "The Quaker Girl."

**Rensselaer Polytechnic Institute**  
**SCHOOL of ENGINEERING**  
Established 1824  
Civil, Mechanical, Electrical  
Send for a Catalogue. **TROY, N.Y.**

(Continued from Page 1)

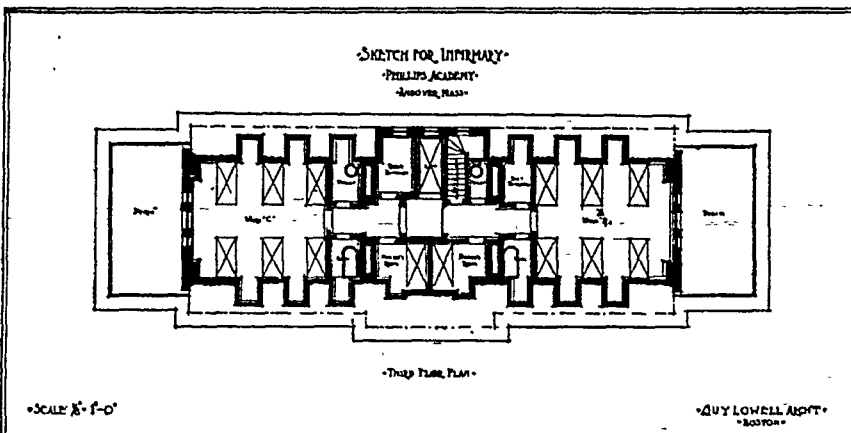
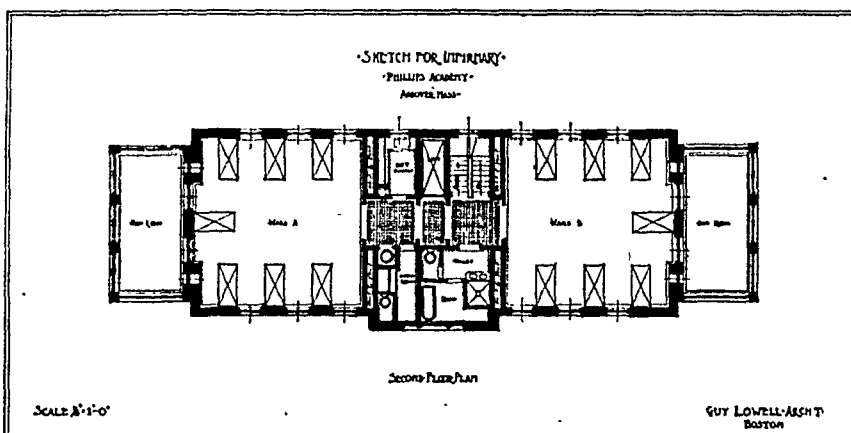
The second floor is divided into two large wards, that on the easterly side being a general ward containing seven beds, and that on the

The building has been most carefully planned under the direction of Dr. Fred T. Murphy of the Board of Trustees, who has been generously assisted in preparing these plans by Dr. Howard of the



western end being so arranged that three of the beds are shut off in single rooms where patients who need special attention can be segregated. Each of these wards opens directly onto the piazza entirely incased in glass and furnishing an ideal solarium. In addition to the main wards, this floor contains a diet kitchen, nurse's room, bathrooms, linen closets, and a sterilizing hopper.

The third floor contains the contagious wards, and is so constructed that it can be entirely shut off from the rest of the building. Its arrangement also provides for separating the wards at two ends, so that two different kinds of contagious disease can easily be handled at the same time. Each ward contains six beds, and that on the westerly end, like the ward on the floor below, provides three single rooms where patients can be isolated if desired. This floor contains also two separate diet kitchens, one attached to each main ward, ample toilet and bathrooms, and two nurses' rooms.



# HAVE YOU SUBSCRIBED FOR THE PHILLIPPIAN

*The PHILLIPPIAN contains all announcements, notices, line-ups for class games, and general school news. It is the official school newspaper, semi-weekly, and is indispensable to all Andover Students.*

**\$2.00 PER YEAR**

## The Andover Press

PRINTERS AND STATIONERS  
TO PHILLIPS ACADEMY,  
SCHOOL BOOKS and SCHOOL SUPPLIES

Proprietors of

## The Andover Bookstore

NEW PRESS BUILDING, - MAIN STREET

Massachusetts General Hospital in Boston, and several other experts on hospital construction in Boston and New York. Every detail of

the construction has been considered with the greatest care, and the time and thought which these interested experts have devoted to the work should assure the school of as carefully equipped a building as it is possible to provide.

**Cross' Coal is "Hot Stuff"**  
It's Great for the Grate

**CROSS COAL COMPANY**  
TEL. CO. 40 Main Street

## Wonderland Theatre

Latest Pictures  
and Illustrated Songs

NIGHTS at 6:30 MAT. at 2

## THE NEW DRUG STORE

**CROWLEY & CO.**

33 MAIN ST., - ANDOVER

## BUCHAN & FRANCIS

Upholsterers and Furniture Dealers  
10 PARK STREET, ANDOVER

Student's Trade a Specialty.

FULL LINE OF...  
**Men's Furnishing Goods**  
Clothing Made to Order and Repairing

**J. WM. DEAN**

MAIN STREET - ANDOVER

**JOS. BOULEAU**

First Class Barber

Musgrove Block - Andover

**HINTON & CO.**

Plain and Fancy Creams, Ices  
Spreads to order. Order early  
Telephone Connection  
HIDDEN ROAD Take Reading car

## TYPEWRITERS

of all makes  
FOR SALE AND TO RENT

E. H. QUIMBY, Dover, N. H.

**PAGE CATERING COMPANY**

LOWELL - MASS

**W. A. ALLEN, Ph.G.**

Prescription Druggist

B. B. Pipes Fudge Sundae  
Appollo Chocolates

MUSGROVE BUILDING - ANDOVER

## STORAGE - REPAIRS - SUPPLIES

RENTING CARS A SPECIALTY.  
5 and 7 Passenger

**Myerscough & Buchan**

CARAGE

59-61 Park St., Andover  
Telephone 208